



BASE STATION ANTENNAS

ANTENNAS FOR BUSINESS AND MISSION CRITICAL USE

For Critical communication you need quality antennas on the mobile terminal and for the base stations in your system.

Wireless communication is increasingly becoming not only a reliable voice medium, but also essential for data and video to support the mission critical decisions.

The base station antennas are designed with different gain for special applications and cover all use (Consumer, Short-range industrial or Professional/Business-Critical applications or Public Safety/Mission-Critical applications).

Airband / TETRA / P25 / PMR / DMR / outdoor / LTE800 / Wideband / High Power



HIGH POWER BASE STATION ANTENNAS

Unity Gain Omni-Directional

HPBASE001/HPBASE004

High power base station antennas for 150 MHz or 450 MHz with integrated multipurpose mounting bracket comes with a generous bandwidth which reduces the need for multiple antennas both in stock and on installation sites.

Frequency	VHF: 112 – 178 MHz / UHF 380 – 530 MHz
Power	500 Watt
Mounting Type	Fixed Tube Mounting Bracket. Stainless Steel Mounting Hardware included.
Mounting Place	On vertical or horizontal mast tube (Ø 30 – 60 mm)
Connector	N-female
Ingress protection	IP66
Survival wind speed	55 m/s (200km/h)
Operating temperature	-55C to +70C (IEC 60068-2-1, IEC 60068-2-2)

Model	Frequency (MHz)	GAIN dBd (dBi)	Height (mm)	Item no.
HPBASE01-A	112-129	0 (2,15)	1855	25001-012A
HPBASE01-B	118-137	0 (2,15)	1518	25001-012B
HPBASE01-C	133-151	0 (2,15)	1575	25001-012C
HPBASE01-D	144-170	0 (2,15)	1445	25001-012D
HPBASE01-E	153-178	0 (2,15)	1425	25001-012E
HPBASE004-A	380-445	0 (2,15)	1032	26004-012A
HPBASE004-B	399-476	0 (2,15)	1005	26004-012B
HPBASE004-C	430-530	0 (2,15)	947	26004-012C



150 MHz BASE ANTENNAS (2–5 dBi)

VHF Omni-Directional – (G1"-11 thread)

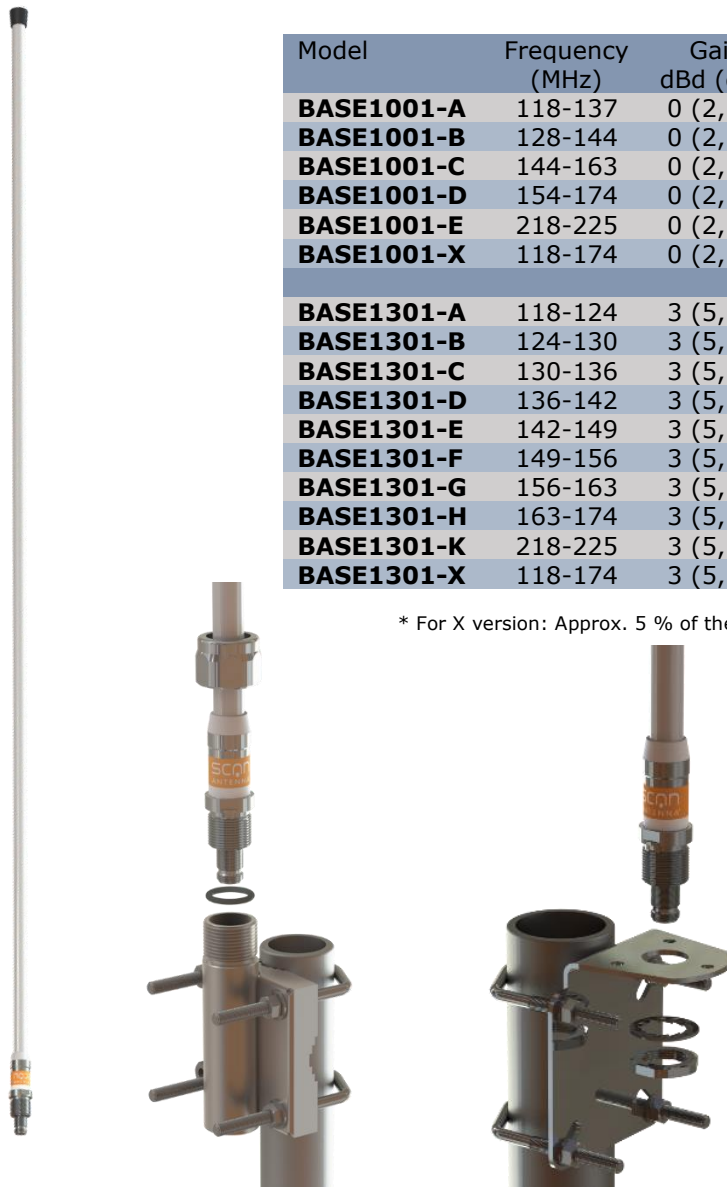
BASE1001/BASE1301

VHF 150 MHz Base Station antennas with 1" threaded pole (G1"-11 thread), can be used with revolving Nut Kit or on optionally brackets. Comes with a generous bandwidth which reduces the need for multiple antennas both in stock and on installation sites

Frequency	118 – 225 MHz
Power	150 Watt
Mounting Type	On 1" threaded pole or bracket (G1"-11 thread) with the supplied fixed Revolving Nut
Mounting Place	On vertical or horizontal mast tube (depending on bracket)
Connector	N-female
Ingress protection	IP66
Survival wind speed	55 m/s (200km/h)
Operating temperature	-55C to +70C (IEC 60068-2-1, IEC 60068-2-2)

Model	Frequency (MHz)	Gain dBd (dBi)	Length (mm)	Item no.
BASE1001-A	118-137	0 (2,15)	1440	21010-004A
BASE1001-B	128-144	0 (2,15)	1340	21010-004B
BASE1001-C	144-163	0 (2,15)	1340	21010-004C
BASE1001-D	154-174	0 (2,15)	1340	21010-004D
BASE1001-E	218-225	0 (2,15)	880	21010-004E
BASE1001-X	118-174	0 (2,15)	1440	*21010-004X
BASE1301-A	118-124	3 (5,15)	3440	21310-004A
BASE1301-B	124-130	3 (5,15)	3440	21310-004B
BASE1301-C	130-136	3 (5,15)	3040	21310-004C
BASE1301-D	136-142	3 (5,15)	3040	21310-004D
BASE1301-E	142-149	3 (5,15)	3040	21310-004E
BASE1301-F	149-156	3 (5,15)	2640	21310-004F
BASE1301-G	156-163	3 (5,15)	2640	21310-004G
BASE1301-H	163-174	3 (5,15)	2640	21310-004H
BASE1301-K	218-225	3 (5,15)	2640	21310-004K
BASE1301-X	118-174	3 (5,15)	3440	*21310-004X

* For X version: Approx. 5 % of the specified Centre Freq (CF)



150 MHz BASE ANTENNAS (2–5 dBi)

VHF Omni-Directional – Integrated Fixed bracket

BASE001/BASE301

VHF 150 MHz base station antennas with integrated multipurpose mounting bracket comes with a generous bandwidth which reduces the need for multiple antennas both in stock and on installation sites.

Frequency	118 – 225 MHz
Power	150 Watt
Mounting Type	Fixed Tube Mounting Bracket. Stainless Steel Mounting Hardware included.
Mounting Place	On vertical or horizontal mast tube (Ø 30 – 60 mm)
Connector	N-female
Ingress protection	IP66
Survival wind speed	55 m/s (200km/h)
Operating temperature	-55C to +70C (IEC 60068-2-1, IEC 60068-2-2)

Model	Frequency (MHz)	Gain dBd (dBi)	Length (mm)	Item no.
BASE001-A	118-137	0 (2,15)	1500	22010-004A
BASE001-B	128-144	0 (2,15)	1400	22010-004B
BASE001-C	144-163	0 (2,15)	1400	22010-004C
BASE001-D	154-174	0 (2,15)	1400	22010-004D
BASE001-E	218-225	0 (2,15)	940	22010-004E
BASE001-X	118-174	0 (2,15)	1500	*22010-004X
BASE301-A	118-124	3 (5,15)	3500	22310-004A
BASE301-B	124-130	3 (5,15)	3500	22310-004B
BASE301-C	130-136	3 (5,15)	3100	22310-004C
BASE301-D	136-142	3 (5,15)	3100	22310-004D
BASE301-E	142-149	3 (5,15)	3100	22310-004E
BASE301-F	149-156	3 (5,15)	2700	22310-004F
BASE301-G	156-163	3 (5,15)	2700	22310-004G
BASE301-H	163-174	3 (5,15)	2700	22310-004H
BASE301-K	218-225	3 (5,15)	2700	22310-004K
BASE301-X	118-174	3 (5,15)	3500	*22310-004X

* For X version: Approx. 5 % of the specified Centre Freq (CF)




450 MHz BASE ANTENNAS (2-7 dBi)

UHF Omni-Directional – (G1"-11 thread)

BASE1004/BASE1304/BASE1504

UHF 450 MHz Base Station antennas with 1" threaded pole (G1"-11 thread), can be used with revolving Nut Kit or on optionally brackets. Comes with a generous bandwidth which reduces the need for multiple antennas both in stock and on installation sites

Frequency	330 – 512 MHz
Power	250 - 300 Watt (depending on model)
Mounting Type	On 1" threaded pole or bracket (G1"-11 thread) with the supplied fixed Revolving Nut
Mounting Place	On vertical or horizontal mast tube (depending on bracket)
Connector	N-female
Ingress protection	IP66
Survival wind speed	55 m/s (200km/h)
Operating temperature	-55C to +70C (IEC 60068-2-1, IEC 60068-2-2)



Model	Frequency (MHz)	Gain dBd (dBi)	Length (mm)	Item no.
BASE1004-G	330-360	0 (2,15)	1130	24004-004F
BASE1004-F	380-400	0 (2,15)	1130	24004-004F
BASE1004-A	406-426	0 (2,15)	1130	24004-004A
BASE1004-B	420-440	0 (2,15)	840	24004-004B
BASE1004-C	430-450	0 (2,15)	840	24004-004C
BASE1004-D	449-471	0 (2,15)	840	24004-004D
BASE1004-E	468-492	0 (2,15)	840	24004-004E
BASE1004-X	406-512	0 (2,15)	1130	*24004-004X
BASE1304 Series				
BASE1304-A	380-400	3 (5,15)	1540	24304-004A
BASE1304-B	406-430	3 (5,15)	1440	24304-004B
BASE1304-C	410-430	3 (5,15)	1440	24304-004C
BASE1304-D	417-450	3 (5,15)	1440	24304-004D
BASE1304-E	434-450	3 (5,15)	1440	24304-004E
BASE1304-F	440-470	3 (5,15)	1440	24304-004F
BASE1304-G	467-485	3 (5,15)	1440	24304-004G
BASE1304-H	485-503	3 (5,15)	1300	24304-004H
BASE1304-X	406-512	3 (5,15)	1540	*24304-004X
BASE1504 Series				
BASE1504-A	380-410	5 (7,15)	2190	24504-004A
BASE1504-B	400-430	5 (7,15)	2190	24504-004B
BASE1504-C	420-450	5 (7,15)	2190	24504-004C
BASE1504-D	440-470	5 (7,15)	2190	24504-004D

* For X version: Approx. 5 % of the specified Centre Freq (CF)

450 MHz BASE ANTENNAS (2–7 dBi)

UHF Omni-Directional – Integrated Fixed bracket

BASE004/BASE304/BASE504

UHF 450 MHz base station antennas with integrated multipurpose mounting bracket comes with a generous bandwidth which reduces the need for multiple antennas both in stock and on installation sites.

Frequency	330 – 512 MHz
Power	250 - 300 Watt (depending on model)
Mounting Type	Fixed Tube Mounting Bracket. Stainless Steel Mounting Hardware included.
Mounting Place	On vertical or horizontal mast tube (Ø 30 – 60 mm)
Connector	N-female
Ingress protection	IP66
Survival wind speed	55 m/s (200km/h)
Operating temperature	-55C to +70C (IEC 60068-2-1, IEC 60068-2-2)

Model	Frequency (MHz)	Gain dBd (dBi)	Length (mm)	Item no.
BASE004-G	330-360	0 (2,15)	1190	23004-004F
BASE004-F	380-400	0 (2,15)	1190	23004-004F
BASE004-A	406-426	0 (2,15)	1190	23004-004A
BASE004-B	420-440	0 (2,15)	900	23004-004B
BASE004-C	430-450	0 (2,15)	900	23004-004C
BASE004-D	449-471	0 (2,15)	900	23004-004D
BASE004-E	468-492	0 (2,15)	900	23004-004E
BASE004-X	406-512	0 (2,15)	1190	*23004-004X
BASE304-A	380-400	3 (5,15)	1600	23304-004A
BASE304-B	406-430	3 (5,15)	1500	23304-004B
BASE304-C	410-430	3 (5,15)	1500	23304-004C
BASE304-D	417-450	3 (5,15)	1500	23304-004D
BASE304-E	434-450	3 (5,15)	1400	23304-004E
BASE304-F	440-470	3 (5,15)	1400	23304-004F
BASE304-G	467-485	3 (5,15)	1400	23304-004G
BASE304-H	485-503	3 (5,15)	1360	23304-004H
BASE304-X	406-512	3 (5,15)	1600	*23304-004X
BASE504-A	380-410	5 (7,15)	2250	23504-004A
BASE504-B	400-430	5 (7,15)	2250	23504-004B
BASE504-C	420-450	5 (7,15)	2250	23504-004C
BASE504-D	440-470	5 (7,15)	2250	23504-004D

* For X version: Approx. 5 % of the specified Centre Freq (CF)



850 MHz BASE ANTENNAS (2-7 dBi)

LTE Omni-Directional – (G1"-11 thread)

BASE1008/BASE1308/BASE1508

UHF 850 MHz Base Station antennas with 1" threaded pole (G1"-11 thread), can be used with revolving Nut Kit or on optionally brackets.
Comes with a generous bandwidth which reduces the need for multiple antennas both in stock and on installation sites

Frequency	790 – 960 MHz
Power	100 – 200 Watt (depending on model)
Mounting Type	On 1" threaded pole or bracket (G1"-11 thread) with the supplied fixed Revolving Nut
Mounting Place	On vertical or horizontal mast tube (depending on bracket)
Connector	N-female
Ingress protection	IP66
Survival wind speed	55 m/s (200km/h)
Operating temperature	-55C to +70C (IEC 60068-2-1, IEC 60068-2-2)

Model	Frequency (MHz)	Gain dBd (dBi)	Length (mm)	Item no.
BASE1008-A	790-862	0 (2,15)	440	24008-004A
BASE1008-B	872-960	0 (2,15)	440	24004-004B
BASE1308-A	890-960	3 (5,15)	1130	24308-004A
BASE1308-B	790-960	3 (5,15)	1440	24308-004B
BASE1308-C	824-894	3 (5,15)	1130	24308-004C
BASE1508-A	824-894	5 (7,15)	1440	24508-004A
BASE1508-B	890-960	5 (7,15)	1440	24508-004B



850 MHz BASE ANTENNAS (2-7 dBi)

LTE Omni-Directional – Integrated Fixed bracket

BASE008/BASE308/BASE508

UHF 850 MHz base station antennas with integrated multipurpose mounting bracket comes with a generous bandwidth which reduces the need for multiple antennas both in stock and on installation sites.

Frequency	790 – 960 MHz
Power	100 – 200 Watt (depending on model)
Mounting Type	Fixed Tube Mounting Bracket. Stainless Steel Mounting Hardware included.
Mounting Place	On vertical or horizontal mast tube (Ø 30 – 60 mm)
Connector	N-female
Ingress protection	IP66
Survival wind speed	55 m/s (200km/h)
Operating temperature	-55C to +70C (IEC 60068-2-1, IEC 60068-2-2)

Model	Frequency (MHz)	Gain dBd (dBi)	Length (mm)	Item no.
BASE008-A	790-862	0 (2,15)	500	23008-004A
BASE008-B	872-960	0 (2,15)	500	23004-004B
BASE308-A	890-960	3 (5,15)	1190	23308-004A
BASE308-B	790-960	3 (5,15)	1500	23308-004B
BASE308-C	824-894	3 (5,15)	1190	23308-004C
BASE508-A	824-894	5 (7,15)	1500	23508-004A
BASE508-B	890-960	5 (7,15)	1500	23508-004B



MOUNTING BRACKETS

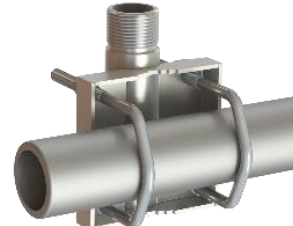
Different types for different purposes



MAST/RAIL MOUNT 1"-14NF
10000-183



MAST/RAIL MOUNT 1"-14NF
10000-123



MAST/RAIL MOUNT G1"-11
10102-003



WALL/RAIL MOUNT (Ø 16.5 MM)
10000-141



MAST/RAIL MOUNT (Ø 25 MM)
10000-173



MAST MOUNT UNIVERSAL
10000-191



DECK MOUNT 1"-14NF
10000-020



CONNECTOR PROTECTION CAP
15 026



1" REVOLVING NUT KIT G1"-11
10000-431



1" ADAPTER TUBE HD (150 MM)
10000-420



WALL BRACKET 87 (Ø11.8)
16200IP



WALL BRACKET 87 (Ø11.8) WHITE
16210IP



WALL BRACKET 87 (Ø13.5)
16220IP



WALL BRACKET 169 (Ø17.5)
16180IP



MAST/WALL MOUNT UNIVERSAL
10000-221



SCAN Antenna is a long- established company and has many designs for customers.

We are a technology-focused company. Growth has come from our reputation for supplying quality products, and we provide effective and well documented manufacturing and quality control. We have modern Head Quarters and laboratories with the most advanced design, simulation, test & measurement tools.

SCAN Antenna supply for heavy duty use when connectivity is vital and truly matters.

*More than a million marine antennas have been produced at our factory.
That product line has primarily been under private label.*

