



CELLULAR, WIFI & IOT ANTENNAS

In wireless you always need antennas **Multi-band, broadband & narrowband**

IoT (Internet of Things) is set to change our lives, both professionally and privately.

IIoT (Industrial Internet of Things) refers to interconnected sensors, instruments, and other devices networked together with computers' industrial applications, including, but not limited to, manufacturing and energy management.

Everything need to be connected to a solid network of base station antennas – you don't want the antenna to be the weakest link.

In battery driven applications it is of outmost importance, that your antenna is effective and transmit all energy and not just convert into heat.

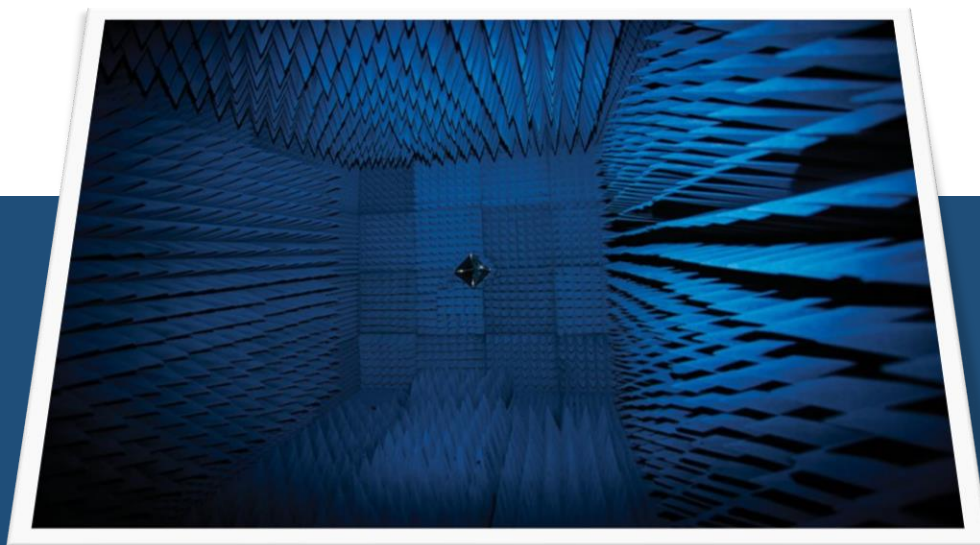
5G/5GNR 700/800/900/1500/1800/2100/2600/3500 MHz

4G/LTE 700/800/1800/1900/2600 MHz

3G/UMTS 700/800/900/2100 MHz

2G/GSM 850/900/1800/1900 MHz

WIFI/Wi-Fi 2.4 GHz/5.0 GHz



5G / 5G NR MULTIBAND ANTENNA



2-9 dBi UHF Omni-Directional – (G1"-11 thread)

UHF5G (2G/3G/4G/5G)

Multiband antenna combining the cellular/mobile GSM(2G), UMTS(3G), LTE(4G), 5G(5G NR) and Wi-Fi frequencies e.g. for near cost vessels or land-based phone and Wi-Fi communication. Ideal for IOT and M2M applications.

Frequency	698 - 3800 MHz (GSM/UMTS/LTE/5G NR)
Power	40 Watt
Gain	0 - 7 dBd (2.15 - 9.15 dBi)
Mounting Type	On 1" threaded pole or bracket (G1"-11 thread) with the supplied fixed Revolving Nut
Mounting Place	On mast
Connector	N-female
Ingress protection	IP66
Length	478 mm
Survival wind speed	55 m/s (200km/h)
Operating temperature	-55C to +70C (IEC 60068-2-1, IEC 60068-2-2)



Model	Item no.
UHF5G Antenna - Bulk	14593-000
UHF5G Antenna - Polybag	14593-001
UHF5G Antenna - Carton tube	14593-002
UHF5G Antenna+ 1" Revolving Nut - Bulk	14593-430
UHF5G Antenna+ 1" Revolving Nut - Polybag	14593-431
UHF5G Antenna+ 1" Revolving Nut - Carton tube	14593-432



IoT

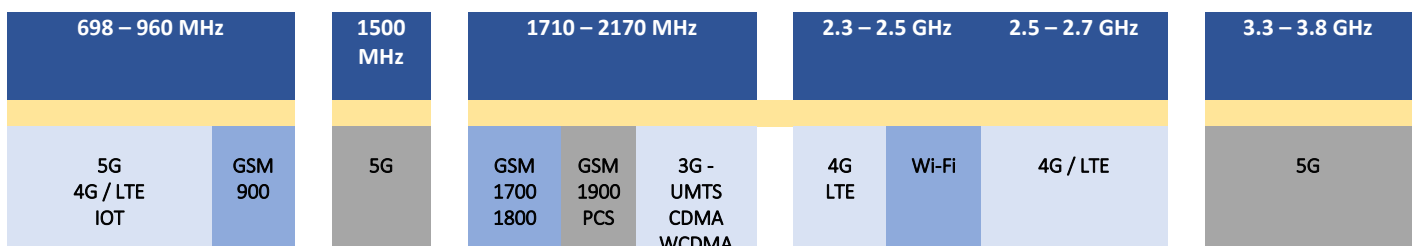
GSM

PCS

UMTS



1" Revolving nut



4G / LTE MULTIBAND ANTENNA



2-9i dB LTE Omni-Directional

WAM4G (Wall-Antenna Multiband 2G/3G/4G)

Long range multiband antenna, ideal for IOT/M2M, cellular/mobile GSM(2G), UMTS(3G), LTE(4G) and WIFI low band communication.

High quality wall mounted antenna especially made for demanding IOT/M2M application

Frequency	790 - 2690 MHz (GSM/UMTS/LTE)
Power	40 Watt
Gain	0 - 7 dBd (2.15 - 9.15 dBi)
Mounting Place	On wall or pole
Connector	N-female
Ingress protection	IP66
Length	440 mm
Survival wind speed	55 m/s (200km/h)
Operating temperature	-55C to +70C (IEC 60068-2-1, IEC 60068-2-2)

Model	Item no.
WAM4G Antenna only - Bulk	40101-000
WAM4G Antenna only - Polybag	40101-001
WAM4G Antenna + Bracket - Polybag	40101-011
Bracket - bulk	16 180 IP
Mounting Kit small (nut + washer) - Bulk	10000-500B
Mounting kit small (nut + washer) - Polybag	10000-501B

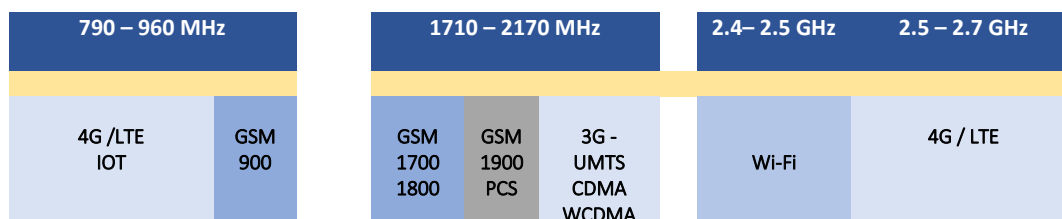


IoT

GSM

PCS

UMTS



4G / LTE MULTIBAND ANTENNA



2-9 dBi LTE Omni-Directional – (G1"-11 thread)

UHF4G (2G/3G/4G)

Multiband antenna combining the cellular/mobile GSM(2G), UMTS(3G), LTE(4G) and WIFI frequencies e.g. for near cost vessels or land-based phone and WIFI communication. Ideal for IOT and M2M applications.

Frequency	790 - 2690 MHz (GSM/UMTS/LTE)
Power	40 Watt
Gain	0 – 7 dBd (2.15 – 9.15 dBi)
Mounting Place	On mast or deck
Mounting	On 1" threaded pole (G1"-11 thread) with Revolving Nut Kit or on optionally brackets
Connector	N-female
Ingress protection	IP66
Length	440 mm
Survival wind speed	55 m/s (200km/h)
Operating temperature	-55C to +70C (IEC 60068-2-1, IEC 60068-2-2)



Model	Item no.
UHF4G Antenna – Bulk	14493-000
UHF4G Antenna – Polybag	14493-001
UHF4G Antenna – Carton tube	14493-002
UHF4G Antenna+ 1" Revolving Nut – Polybag	14493-431
UHF4G Antenna+ 1" Revolving Nut – Carton tube	14493-433



IoT

GSM

PCS

UMTS



790 – 960 MHz		1710 – 2170 MHz			2.4– 2.5 GHz	2.5 – 2.7 GHz
4G / LTE IOT	GSM 900	GSM 1700 1800	GSM 1900 PCS	3G - UMTS CDMA WCDMA	Wi-Fi	4G / LTE

WIFI – DUALBAND ANTENNA



WIFI Omni-Directional – (G1"-11 thread)

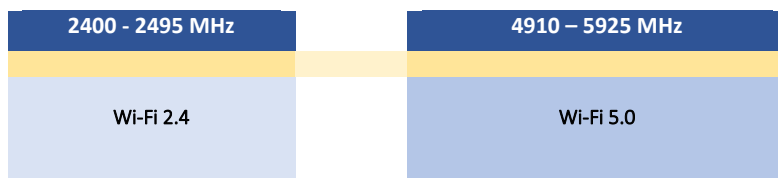
WIFI2B9 (2.4/5.0 GHz)

Long range high gain dual band WIFI antenna designed for professional maritime use. Longer range and better signal quality. Covers all WIFI bands (2.4 GHz and 5 GHz).

Frequency	2400 - 2495 MHz, 4910 - 5925 MHz (IEEE 802.11 (WLAN) a/b/g/h/j/n/p/ac)
Power	10 Watt
Gain	5 dBd (7.15 dBi)
Mounting Type	On 1" threaded pole or bracket (G1"-11 thread) with the supplied fixed Revolving Nut
Connector	N-female
Ingress protection	IP66
Length	558 mm
Survival wind speed	55 m/s (200km/h)
Operating temperature	-55C to +70C (IEC 60068-2-1, IEC 60068-2-2)



Model	Item no.
WIFI29B Antenna – Bulk	18001-000
WIFI29B Antenna – Polybag	18001-001
WIFI29B Antenna – Carton tube	18001-002
WIFI29B Antenna + 1" Revolving Nut – Bulk	18001-431
WIFI29B Antenna + 1" Revolving Nut – Polybag	18001-432



LTE/IOT/SIGFOX ANTENNA

LTE Omni-Directional – (G1"-11 thread)

LTE700WB/LTE800WB

This wide-band high-gain antenna is developed for use in both maritime and land environments. The high gain design overcomes poor phone and data coverage in the mobile operator networks (LTE, UMTS & GSM), e.g. along cost lines and in rural areas.

Frequency	725 – 960 MHz
Power	200 Watt
Gain	3 dBd (5.15 dBi)
Mounting Type	On 1" threaded pole or bracket (G1"-11 thread) with the supplied fixed Revolving Nut
Connector	N-female
Ingress protection	IP66
Survival wind speed	55 m/s (200km/h)
Operating temperature	-55C to +70C (IEC 60068-2-1, IEC 60068-2-2)

Model	Frequency (MHz)	Gain dBd (dBi)	Length (mm)	Item no.
LTE700WB - Bulk	725-930	3 (5,15)	1540	14076-000
LTE700WB - in polybag	725-930	3 (5,15)	1540	14076-001
LTE700WB - in Carton tube	725-930	3 (5,15)	1540	14076-002
LTE700WB + 1" Revolving Nut - Polybag	725-930	3 (5,15)	1540	14076-431
LTE700WB + 1" Revolving Nut - Polybag	725-930	3 (5,15)	1540	14076-432
LTE800WB - Bulk	790-960	3 (5,15)	1440	14086-000
LTE800WB - in polybag	790-960	3 (5,15)	1440	14086-001
LTE800WB - in Carton tube	790-960	3 (5,15)	1440	14086-002
LTE800WB + 1" Revolving Nut - Polybag	790-960	3 (5,15)	1440	14086-431
LTE800WB + 1" Revolving Nut - Polybag	790-960	3 (5,15)	1440	14086-432



SLIM LOW PROFILE IOT ANTENNAS

Wall Mounted Low Profile Directional Antennas (Toblerone)

IoT

IOT434/IOT868/IOT245/IOT826

Slim multiband or narrow-band antennas designed for the mobile IOT/M2M, GSM/UMTS/LTE or Wi-Fi systems

Mounting place	On wall
Power	5 watts
Size	122.5 x 35 x 42.5 mm (L x H x W)
Color	White



IoT

GSM

PCS

UMTS



Model	Frequency	Gain	Pattern	Connection	Item no.
IOT434	432 - 436 MHz (ISM)	0 dBd	Directional	2.5m Cable + MCX-male	48005-011
IOT868	860 - 876 MHz (ISM)	0 dBd	Directional	1.5m Cable + SMA-male	48001-011
IOT245	2400-2495/4910-5925 MHz (WiFi)	0 dBd	Directional	2.5m Cable + SMA-male	48007-011
IOT826	790 - 2690 MHz (GSM/UMTS/LTE)	0 dBd	Directional	2.5m Cable + MCX-male	48006-011

Antennas can be ordered as bulk. If you put 4800x-010 instead of xxxxx-011

PUCK ANTENNA - Extendr®



Extendr® 1 (2G/3G/4G)

Rugged tamper-proof multiband antenna combining all major cellular bands. The antenna is ideal for IoT and M2M applications providing a stable connection in critical areas. The Extendr® antenna family offers multiple mounting options. The antenna is offered with customer specified cables and connectors.

Frequency	790 – 2690 MHz (GSM/UMTS/LTE)
Mounting	Through hole, Adhesive or Magnetic Mounting
Height above roof	46 mm
Diameter	111 mm
Connection	Fixed cable 1.5m SMA-male
Ingress protection	IP67

Extendr® 2 (2G/3G/4G+GNSS)

Rugged tamper-proof multiband antenna combining all major cellular bands and 4 GNSS applications. The antenna is ideal for fleet management, IoT and M2M applications providing a stable connection in critical areas. The Extendr® antenna family offers multiple mounting options. The antenna is offered with customer specified cables and connectors.

Frequency	790 – 2690 MHz (GSM/UMTS/LTE) 1561.1 – 1605.4 MHz (GNSS)
Mounting	Through hole, Adhesive or Magnetic Mounting
Height above roof	46 mm
Diameter	111 mm
Connection1 LTE	Fixed cable 1.5m SMA-male (RED)
Connection2 GNSS	Fixed cable 1.5m SMA-male (BLUE)
Ingress protection	IP67



Extendr® 3 (2G/3G/4G+GNSS+WiFi)

Rugged tamper-proof multiband antenna combining all major cellular bands, all Wi-Fi bands and 4 GNSS applications. The antenna is ideal for fleet management, IoT and M2M applications providing a stable connection in critical areas. The Extendr® antenna family offers multiple mounting options. The antenna is offered with customer specified cables and connectors.

Frequency	790 – 2690 MHz (GSM/UMTS/LTE) 1561.1 – 1605.4 MHz (GNSS) 2400 – 2495 MHz / 4910 – 5925 MHz (WiFi)
Mounting	Through hole, Adhesive or Magnetic Mounting
Height above roof	46 mm
Diameter	111 mm
Connection1 LTE	Fixed cable 1.5m SMA-male (RED)
Connection2 GNSS	Fixed cable 1.5m SMA-male (BLUE)
Connection2 Wi-Fi	Fixed cable 1.5m SMA-male (BLACK)
Ingress protection	IP67

Mounting	Extendr 1	Extendr 2	Extendr 3
Through hole	48011-001	48012-001	48013-001
Adhesive	48021-001	48022-001	48023-001
Magnetic	48031-001	48033-001	48033-001

Antennas are packed in bag but can be ordered as bulk. If you put xxxxx-**000** instead of xxxxx-001.

LOW PROFILE ANTENNA TeleSat



TeleSat-5 (2G/3G/4G)

Heavy duty Omni-Directional 5-BAND antenna for through-hole roof mounting on trucks, trailers etc. Low profile design.

Frequency	790 – 2690 MHz (GSM/UMTS/LTE)
Mounting	Bolt-on with adhesive for effective sealing
Height above roof / Diameter	16 mm / Ø 92 mm
Connection	Fixed cable 0.15m SMA-female
Ingress protection	IP67

TeleSat-6 (2G/3G+GNSS)

Heavy duty Omni-Directional 6-BAND antenna including built-in active GNSS antenna for tracking and navigation purpose. Through-hole roof mounting on trucks, trailers etc. Low profile design.

Frequency	824 – 2170 MHz (GSM/UMTS) / 1561.1 – 1605.4 MHz (GNSS)
Mounting	Bolt-on with adhesive for effective sealing
Height above roof / Diameter	16 mm / Ø 92 mm
Connection (GSM/UMTS) Red	Fixed cable 0.15m SMA-female (other types available)
Connection2 (GNSS) Blue	Fixed cable 0.20m FME-female (other types available)
Ingress protection	IP67



TeleSat-7 (2G/3G+WLAN+GNSS)

Heavy duty Omni-Directional 7-BAND antenna including active GNSS antenna for through-hole roof mounting on trucks, trailers etc. including full 1/4 external WLAN whip antenna for optimum radiation performance. Low profile design.

Frequency	824 – 2170 MHz (GSM/UMTS) / 2310 – 2485 MHz (WLAN) / 1561.1 – 1605.4 MHz (GNSS)
Mounting	Bolt-on with adhesive for effective sealing
Height above roof / Diameter	16 mm / Ø 92 mm
Connection (GSM/UMTS) Red	Fixed cable 0.15m SMA-female (other types available)
Connection2 (WLAN) Black	Fixed cable 0.17m SMA-female (other types available)
Connection3(GNSS) blue	Fixed cable 0.20m FME-female (other types available)
Ingress protection	IP67



TeleSat-8 (2G/3G+WiFi+GNSS)

Heavy duty Omni-Directional 8-BAND antenna with built-in active GNSS antenna for through-hole roof mounting on trucks, trailers etc. Low profile design.

Frequency	824 – 2170 MHz (GSM/UMTS) / 1561.1 – 1605.4 MHz (GNSS) / 2400 – 2485 MHz/4915 – 5825 MHz (WiFi)
Mounting	Bolt-on with adhesive for effective sealing
Height above roof / Diameter	16 mm / Ø 92 mm
Connection (GSM/UMTS) Red	Fixed cable 0.15m SMA-female (other types available)
Connection2 (WLAN) Black	Fixed cable 0.17m SMA-female (other types available)
Connection3(GNSS) blue	Fixed cable 0.20m FME-female (other types available)
Ingress protection	IP67



Model	Item no.
TeleSat-5	45 500
TeleSat-6	45 600
TeleSat-7	45 700
TeleSat-8	45 800

Antennas comes in bag but can be ordered as bulk. If you put IP behind item no (example 45 xxx **IP**).

LOW PROFILE TAMPER-PROOF ANTENNAS

Low profile mobile antennas for in-car, body mount, on-glass, through hole, etc.



TeleSat-5S (2G/3G)

Heavy duty Omni-Directional 5-BAND antenna for roof mounting on trucks, trailers etc. Low profile design.

Frequency	824 – 2170 MHz (GSM/UMTS)
Mounting	Adhesive
Height above roof / Diameter	16 mm / Ø 92 mm
Connection	Fixed cable 2.5m FME-female (other types available)

DOTCOM QUAD (2G/3G)

4-band self-adhesive linear patch antenna for in-car screen mounting. Low profile design.

Frequency	870-960 MHz / 1710 – 2170 MHz (GSM/UMTS)
Mounting	Adhesive pad
Diameter	Ø 54 mm
Connection	Fixed cable 3m FME-female (other types available)



MINI-DOTCOM DUAL (2G)

Dual frequency self-adhesive linear patch antenna for in-car screen mounting. Low profile design.

Frequency	890-960 MHz / 1710 – 1880 MHz (GSM)
Mounting	Adhesive (on screen)
Diameter	Ø 33 mm
Connection	Fixed cable 2.5m FME-female (other types available)

MINI-WLAN 2.4 (WLAN)

Self-adhesive dipole antenna for in-car screen mounting. Low profile design.

Frequency	2400 – 2500 MHz (WLAN 2.4, ISM)
Mounting	Adhesive (on screen)
Diameter	Ø 33 mm
Connection (GSM/UMTS) Red	Fixed cable 0.3m SMA-male (other types available)



Model	Item no.
TeleSat-5S	45 500S
DOTCOM QUAD	20 500
MINI-DOTCOM DUAL	20 700
MINI-WLAN 2.4	80 001

Antennas comes in bag but can be ordered as bulk. If you put IP behind item no (example xx xxx **IP**).

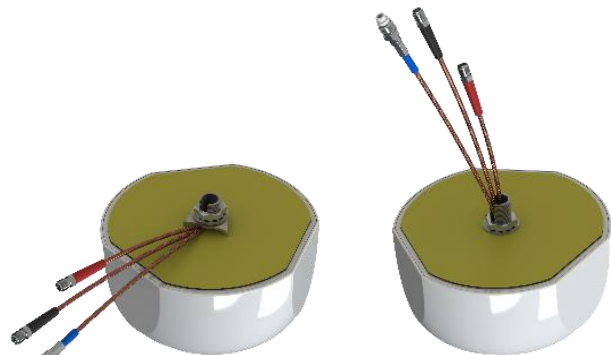
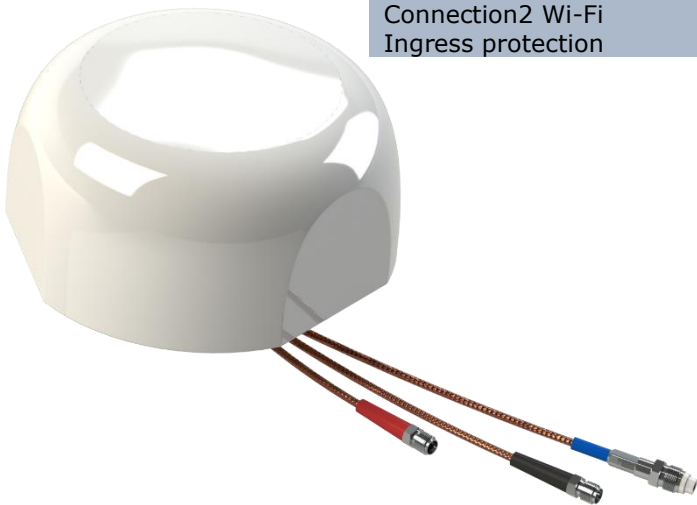
DOME ANTENNA - Commutr®

Commutr® (2G/3G/4G+GNSS+WiFi)

Full Omni-Directional multiband antenna for through-hole roof mounting. Especially made for demanding mobile communication applications on trucks and buses.

- 10 BANDS IN ONE INSTALLATION (LTE/GSM/UMTS/WLAN/GNSS)
- LOW PROFILE DESIGN
- ACTIVE GNSS ANTENNA
- WIDE RANGE OF EXTENSION CABLES AVAILABLE (NOT INCLUDED)

Frequency	790 – 2690 MHz (GSM/UMTS/LTE) 1561.1 – 1605.4 MHz (GNSS) 2412 – 2484 MHz / 4915 – 5825 MHz (WiFi)
Mounting	Bolt-on with adhesive tape for effective sealing
Height above roof	61.5 mm
Diameter	124 mm
Connection1 LTE	Fixed cable 0.20m SMA-female (RED)
Connection2 GNSS	Fixed cable 0.25m FME-female (BLUE)
Connection2 Wi-Fi	Fixed cable 0.30m SMA-female (BLACK)
Ingress protection	IP66



Model	Item no.	Kit
Commutr Antenna	48003-001	Antenna
Commutr kit-06 (5m)	48003-011	Antenna + 3x extension 5m cables
Commutr kit-07 (3m)	48003-021	Antenna + 3x extension 3m cables



GSM1800/GSM1900/LTE ANTENNAS

Omni Directional – (G1"-11 thread)

UHF186/189, UHF196/199 & UHF219

Antennas especially made for GSM1800, GSM1900, DECT, DCS, UMTS/3G & LTE

Frequency	1710 - 2170 MHz (covered by 3 models)
Power	100 Watt (40-watt UHF219)
Mounting Type	On 1" threaded pole or bracket (G1"-11 thread) with the supplied fixed Revolving Nut
Mounting Place	On vertical or horizontal mast tube (depending on bracket)
Connector	N-female
Ingress protection	IP66
Survival wind speed	55 m/s (200km/h)
Operating temperature	-55C to +70C (IEC 60068-2-1, IEC 60068-2-2)

Model	Frequency (MHz)	Gain dBd (dBi)	Length (mm)	Item no.
UHF186 – Bulk	1710-1880	3 (5,15)	640	14186-000
UHF186 – Polybag	1710-1880	3 (5,15)	640	14186-001
UHF186 – Carton tube	1710-1880	3 (5,15)	640	14186-002
UHF189 – Bulk	1710-1880	5 (7,15)	840	14189-000
UHF189 – Polybag	1710-1880	5 (7,15)	840	14189-001
UHF189 – Carton tube	1710-1880	5 (7,15)	840	14189-002
UHF196 – Bulk	1850-1990	3 (5,15)	640	14196-000
UHF196 – Polybag	1850-1990	3 (5,15)	640	14196-001
UHF196 – Carton tube	1850-1990	3 (5,15)	640	14196-002
UHF199 – Bulk	1850-1990	5 (7,15)	840	14199-000
UHF199 – Polybag	1850-1990	5 (7,15)	840	14199-001
UHF199 – Carton tube	1850-1990	5 (7,15)	840	14199-002
UHF219 – Bulk	1920-2170	5 (7,15)	640	14219-000
UHF219 – Polybag	1920-2170	5 (7,15)	640	14219-001
UHF219 – Carton tube	1920-2170	5 (7,15)	640	14219-002



GSM

UMTS

WLAN/ISM/UMTS ANTENNAS

Omni Directional Light Antennas

UHF243 & UHF263

Antenna especially made for WLAN, Wi-Fi 2.4, ISM and 4G/LTE

Frequency	2300 - 2690 MHz (covered by 2 models)
Power	400 Watt
Mounting Type	On 1" threaded pole or bracket (G1"-11 thread) with the supplied fixed Revolving Nut
Mounting Place	On vertical or horizontal mast tube (depending on bracket)
Connector	N-female
Ingress protection	IP66
Survival wind speed	55 m/s (200km/h)
Operating temperature	-55C to +70C (IEC 60068-2-1, IEC 60068-2-2)

Model	Frequency (MHz)	Gain dBd (dBi)	Length (mm)	Item no.
UHF243 - Bulk	2300-2500	0 (2,15)	210	14243-000
UHF243 - Polybag	2300-2500	0 (2,15)	210	14243-001
UHF243 - Carton tube	2300-2500	0 (2,15)	210	14243-002
UHF263 - Bulk	2500-2690	0 (2,15)	210	14263-000
UHF263 - Polybag	2500-2690	0 (2,15)	210	14263-001
UHF263 - Carton tube	2500-2690	0 (2,15)	210	14263-002



MOUNTING BRACKETS

Different types for different purposes



MAST/RAIL MOUNT 1"-14NF
10000-183



MAST/RAIL MOUNT 1"-14NF
10000-123



MAST/RAIL MOUNT G1"-11
10102-003



WALL/RAIL MOUNT (Ø 16.5 MM)
10000-141



MAST/RAIL MOUNT (Ø 25 MM)
10000-173



MAST MOUNT UNIVERSAL
10000-191



DECK MOUNT 1"-14NF
10000-020



CONNECTOR PROTECTION CAP
15 026



1" REVOLVING NUT KIT G1"-11
10000-431



1" ADAPTER TUBE HD (150 MM)
10000-420



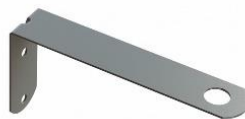
WALL BRACKET 87 (Ø11.8)
16200IP



WALL BRACKET 87 (Ø11.8) WHITE
16210IP



WALL BRACKET 87 (Ø13.5)
16220IP



WALL BRACKET 169 (Ø17.5)
16180IP



MAST/WALL MOUNT UNIVERSAL
10000-221

SCAN Antenna is a long- established company and has many designs for customers.

We are a technology-focused company. Growth has come from our reputation for supplying quality products, and we provide effective and well documented manufacturing and quality control. We have modern Head Quarters and laboratories with the most advanced design, simulation, test & measurement tools.

SCAN Antenna supply for heavy duty use when connectivity is vital and truly matters.

*More than a million marine antennas have been produced at our factory.
That product line has primarily been under private label.*

