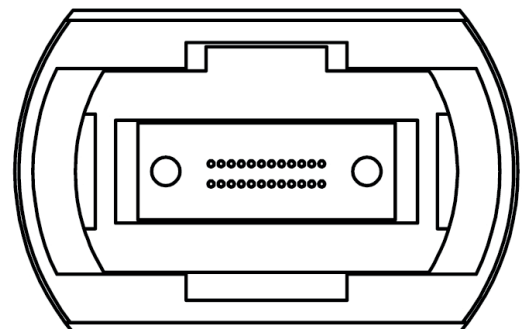


# MPO/MTP® 24 Patch Cords and Harness Cables with 24 Fibers

Superior quality and flexibility combined with extremely short installation time are the most urgent demands of modern IT infrastructures. Such challenging demands can be perfectly met with high-performance pre-terminated cabling solutions by Telegärtner.

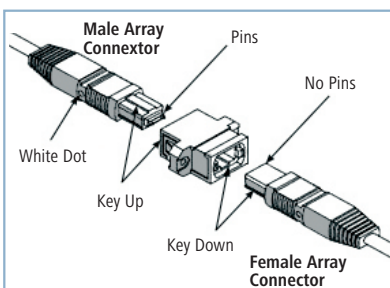
The pre-terminated, ready-to-install MPO/MTP® 24 cabling system is the future-proof and highly economic solution for fiber optic networks from 10 Mbit/s up to 100 Gbit/s according to EN 50173, EN 50174, ISO/IEC 11801 and ANSI/TIA-568.

Telegärtner offers components according to fiber polarity type A for a clear, consistent fiber sequence throughout the entire link. Components according to fiber polarity type B or C are also available, of course.

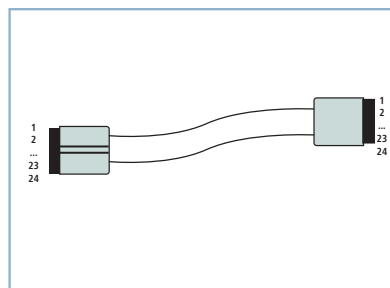


1 2 3 4 5 6 7 8 9 10 11 12  
13 14 15 16 17 18 19 20 21 22 23 24  
(Connector end-face and fiber positions)

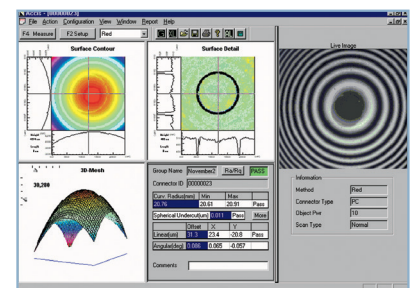
## MPO/MTP® benefits at a glance



**Pre-terminated cables**  
for quick installation without the need for tools or special equipment



**Fiber polarity type A**  
for clear structures and easy migration to 40 and 100 Gigabit Ethernet.



**High performance and quality**  
due to factory termination and testing for highest reliability and efficiency.

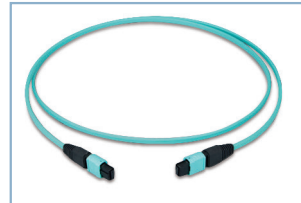
# MPO/MTP® 24

## Patch Cords and Harness Cables with 24 Fibers

### MPO/MTP® 24 (female) to MPO/MTP® 24 (female) patch cord

#### Technical Data:

Insertion loss (IL) at 850 nm:	typ. 0.2 dB, max. 0.5 dB
Return loss (RL) at 850 nm:	min. 30 dB
Outer diameter of the cable:	3.8 mm
Minimum bending radius:	10 x outer diameter
Mating cycles:	min. 500
Operating temperature	-5 °C up to +55 °C



#### Fiber polarity type A

Fiber position con.1	1	2	3	4	5	6	7	8	9	10	11	12	13	14	15	16	17	18	19	20	21	22	23	24
Fiber position con.2	1	2	3	4	5	6	7	8	9	10	11	12	13	14	15	16	17	18	19	20	21	22	23	24

Length	Order No.	Patch Cord	Connector
1,0 m	L00830A2400	aqua G50/125 OM3	MPO 24 aqua
2,0 m	L00831A2400	aqua G50/125 OM3	MPO 24 aqua
3,0 m	L00832A2400	aqua G50/125 OM3	MPO 24 aqua
5,0 m	L00833A2400	aqua G50/125 OM3	MPO 24 aqua
10,0 m	L00835A2400	aqua G50/125 OM3	MPO 24 aqua

Other lengths and fiber assignments on request.

Length	Order No.	Patch Cord	Connector
1,0 m	L00830A2401	violet G50/125 OM4	MPO24 violet
2,0 m	L00831A2401	violet G50/125 OM4	MPO24 violet
3,0 m	L00832A2401	violet G50/125 OM4	MPO24 violet
5,0 m	L00833A2401	violet G50/125 OM4	MPO24 violet
10,0 m	L00835A2401	violet G50/125 OM4	MPO24 violet

Other lengths and fiber assignments on request.

### MPO/MTP® 24 (male) to 2x MPO/MTP® 12 (male) harness cable

#### Technical Data:

Insertion loss (IL) at 850 nm:	typ. 0.2 dB, max. 0.5 dB
Return loss (RL) at 850 nm:	min. 30 dB
Outer diameter of the cable:	3.8 mm
Minimum bending radius:	10 x outer diameter
Diameter single cable:	3.1 mm
Length single cable	app. 50 cm
Mating cycles:	min. 500
Operating temperature:	-5 °C up to +55 °C



#### Fiber polarity type A

Fiber position MPO24	1	2	3	4	5	6	7	8	9	10	11	12	13	14	15	16	17	18	19	20	21	22	23	24
Fiber position MPO12 - 1	1	2	3	4	5	6	7	8	9	10	11	12	-	-	-	-	-	-	-	-	-	-	-	-
Fiber position MPO12 - 2	-	-	-	-	-	-	-	-	-	-	-	-	1	2	3	4	5	6	7	8	9	10	11	12

Length	Order No.	Harness	1 <sup>st</sup> end	2 <sup>nd</sup> end
1,0 m	L00830A2410	aqua G50/125 OM3	MPO 24 aqua	2x MPO 12 aqua
2,0 m	L00831A2410	aqua G50/125 OM3	MPO 24 aqua	2x MPO 12 aqua
3,0 m	L00832A2410	aqua G50/125 OM3	MPO 24 aqua	2x MPO 12 aqua
5,0 m	L00833A2410	aqua G50/125 OM3	MPO 24 aqua	2x MPO 12 aqua
10,0 m	L00835A2410	aqua G50/125 OM3	MPO 24 aqua	2x MPO 12 aqua
1,0 m	L00830A2411	violet G50/125 OM4	MPO 24 violet	2x MPO 12 violet
2,0 m	L00831A2411	violet G50/125 OM4	MPO 24 violet	2x MPO 12 violet
3,0 m	L00832A2411	violet G50/125 OM4	MPO 24 violet	2x MPO 12 violet
5,0 m	L00833A2411	violet G50/125 OM4	MPO 24 violet	2x MPO 12 violet
10,0 m	L00835A2411	violet G50/125 OM4	MPO 24 violet	2x MPO 12 violet

Other lengths and fiber assignments on request.